



India Meteorological Department
Earth System Science Organisation
(Ministry of Earth Sciences)

BULLETIN NO.: 39 (BAY OF BENGAL 01/2020)

TIME OF ISSUE: 0200 HOURS IST

DATED: 21.05.2020

FROM: INDIA METEOROLOGICAL DEPARTMENT (FAX NO. 24643965/24699216/24623220)

TO: CONTROL ROOM, NDM, MINISTRY OF HOME AFFAIRS (FAX.NO. 23093750)

CONTROL ROOM NDMA (FAX.NO. 26701729)

CABINET SECRETARIAT (FAX.NO.23012284, 23018638)

PS TO HON'BLE MINISTER FOR S & T AND EARTH SCIENCES (FAX NO.23316745)

SECRETARY, MOES, (FAX NO. 24629777)

H.Q. (INTEGRATED DEFENCE STAFF AND CDS) (FAX NO. 23005137/23005147)

DIRECTOR GENERAL, DOORDARSHAN (23385843)

DIRECTOR GENERAL, AIR (23421105, 23421219)

PIB MOES (FAX NO. 23389042)

UNI (FAX NO. 23355841)

D.G. NATIONAL DISASTER RESPONSE FORCE (NDRF) (FAX NO. 26105912, 2436 3260)

DIRECTOR, PUNCTUALITY, INDIAN RAILWAYS (FAX NO. 23388503)

CHIEF SECRETARY, ANDAMAN & NICOBAR ISLANDS (FAX NO. 03192- 232656)

CHIEF SECRETARY, WEST BENGAL (FAX NO. 033-22144328)

CHIEF SECRETARY, GOVT. OF ODISHA (FAX NO. 0674 -2536660)

CHIEF SECRETARY, GOVT. OF ASSAM (FAX NO. 0361-2237200)

CHIEF SECRETARY, GOVT. OF MEGHALAYA (FAX NO. 0364 - 2225978)

CHIEF SECRETARY, GOVT. OF SIKKIM (FAX NO. 03592 -204323)

CHIEF SECRETARY, ANDHRA PRADESH (FAX NO. 0863-2441029, 08645-246600)

CHIEF SECRETARY, TAMIL NADU (FAX NO. 044-25672304)

CHIEF SECRETARY, PUDUCHERRY (FAX NO. 0413-2337575, 2334145)

Sub: Super Cyclonic Storm 'AMPHAN' (pronounced as UM-PUN) lay over Bangladesh & adjoining West Bengal as a Severe Cyclonic Storm: Cyclone warning for West Bengal coast: Red Message.

The Very Severe Cyclonic Storm 'AMPHAN' (pronounced as **UM-PUN**) over West Bengal coast moved north-northeastwards with a speed of 28 kmph during past 06 hours and lay centered at 2330 hrs IST of yesterday, the 20th may 2020 over Bangladesh and adjoining West Bengal near **Lat. 23.3°N and Long. 89.0°E** as a Severe Cyclonic Storm about 110 km northeast of Kolkata, **240 km northeast of Digha (West Bengal), 200 km north-northeast of Sagar Islands and 190 km northwest of Khepupara (Bangladesh). It is very likely to continue to move north-northeastwards and weaken further into a Cyclonic Storm during next 06 hours.**

The system is now being continuously tracked by the Doppler Weather Radar (DWR) at Kolkata (West Bengal).

Forecast track and intensity are given in the following table:

Date/Time(IST)	Position (Lat. °N/ long. °E)	Maximum sustained surface wind speed (Kmph)	Category of cyclonic disturbance
20.05.20/2330	23.3/89.0	90-100 gusting to 110	Severe Cyclonic Storm
21.05.20/0530	24.6/89.5	60-70 gusting to 80	Cyclonic Storm
21.05.20/1130	26.0/90.3	30-40 gusting to 50	Depression

(1) Heavy rainfall Warning:

West Bengal

Light to moderate rainfall at a few places likely over Gangetic West Bengal (Nadia, east Burdman, Murshidabad, northern parts of North 24 Pargana districts) during next 06 hours.

Spatial rainfall distribution: Isolated: <25%, A few: 26-50%, Many: 51-75%, Most: 76-100%

Rainfall amount (mm): Heavy rain: 64.5 – 115.5, Very heavy rain: 115.6 – 204.4, Extremely heavy rain: 204.5 or more.

Sub-Himalayan West Bengal and Sikkim

Light to moderate rainfall at most places with heavy to very heavy falls at a few places over Malda & Dinajpur districts during next 06 hours and over most of the districts of Sub-Himalayan West Bengal & Sikkim on 21st May, 2020.

Assam & Meghalaya

Light to moderate rainfall at most places with heavy falls at isolated places over Meghalaya during next 06 hours and heavy to very heavy falls at a few places over the western districts of Assam & Meghalaya on 21st May.

(2) Wind warning

West Bengal

- Squally wind, speed reaching 50 to 60 kmph gusting to 70 kmph very likely over Nadia, east Burdman, Murshidabad, northern parts of North 24 Pargana districts during next 06 hours. It is very likely to decrease during subsequent 06 hours.

Deep Sea area

- Gale wind speed reaching 60-70 gusting to 80 kmph is prevailing over northern parts of northwest Bay of Bengal. It is likely to continue for next 06 hours. It will gradually decrease thereafter. Squally wind speed reaching 30-40 gusting to 50 kmph likely during subsequent 06 hours.

(3) Sea condition:

- Sea condition is rough to very rough over North Bay of Bengal and is likely to continue for next 12 hours.

(4) Fishermen Warning

- The fishermen are advised not to venture into North Bay of Bengal during next 12 hours. Also, fishermen are advised not to venture into North Bay of Bengal along and off North Odisha, West Bengal and adjoining Bangladesh coasts during next 12 hours.

Kindly visit www.rsmcnewdelhi.imd.gov.in and www.mausam.imd.gov.in for updates on the system.

Next Bulletin will be issued at 0530 hours IST of today, the 21st May, 2020.

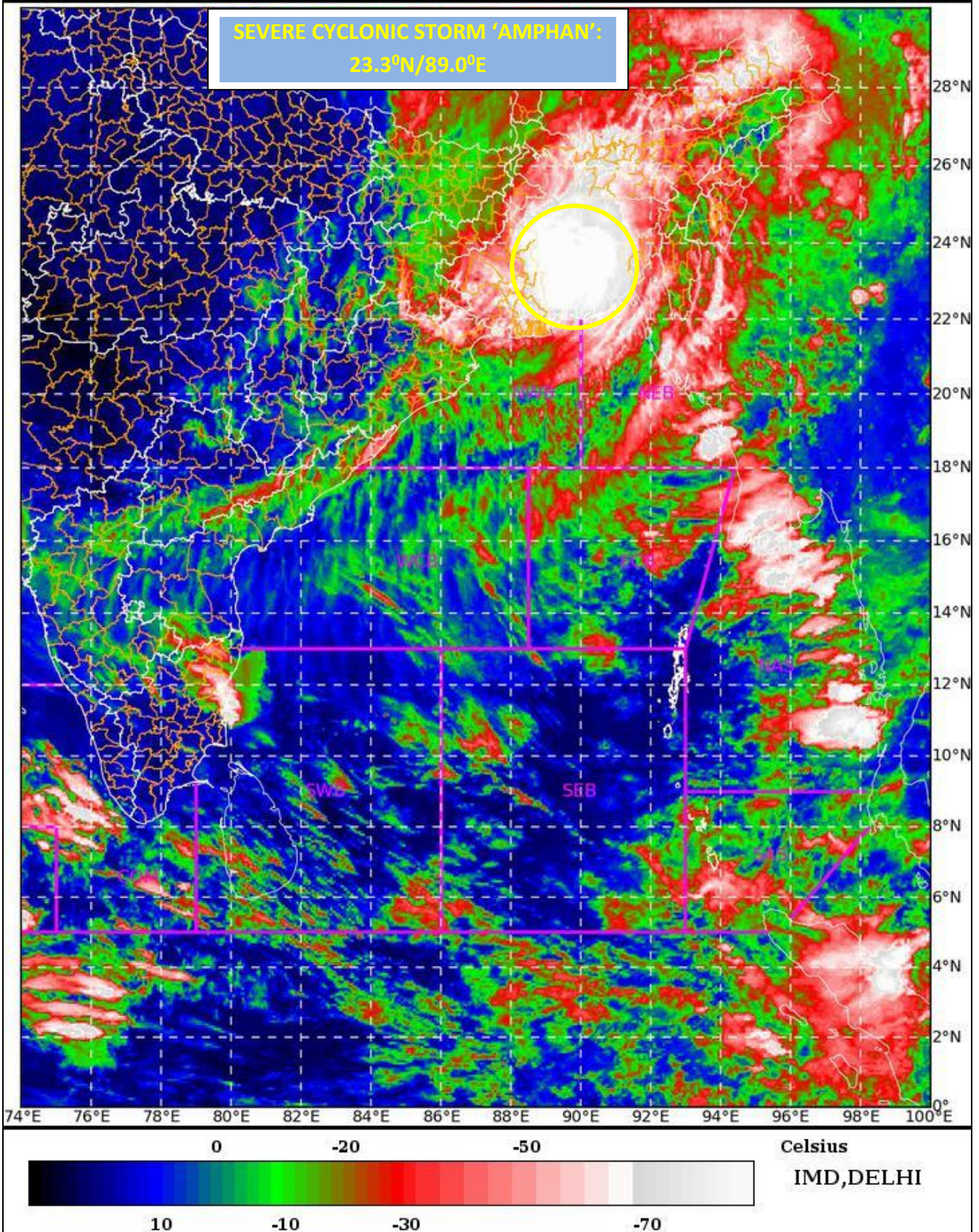
(V R Durai)
Scientist-E, RSMC, New Delhi

Copy to: CRS, Pune/ ACWC Chennai/ ACWC Kolkata/CWC Bhubaneswar/ /CWC Visakhapatnam

SAT : INSAT-3D IMG 20-05-2020/(1900 to 1926) GMT

IMG_TIR1_TEMP 10.8 um 21-05-2020/(0030 to 0056) IST

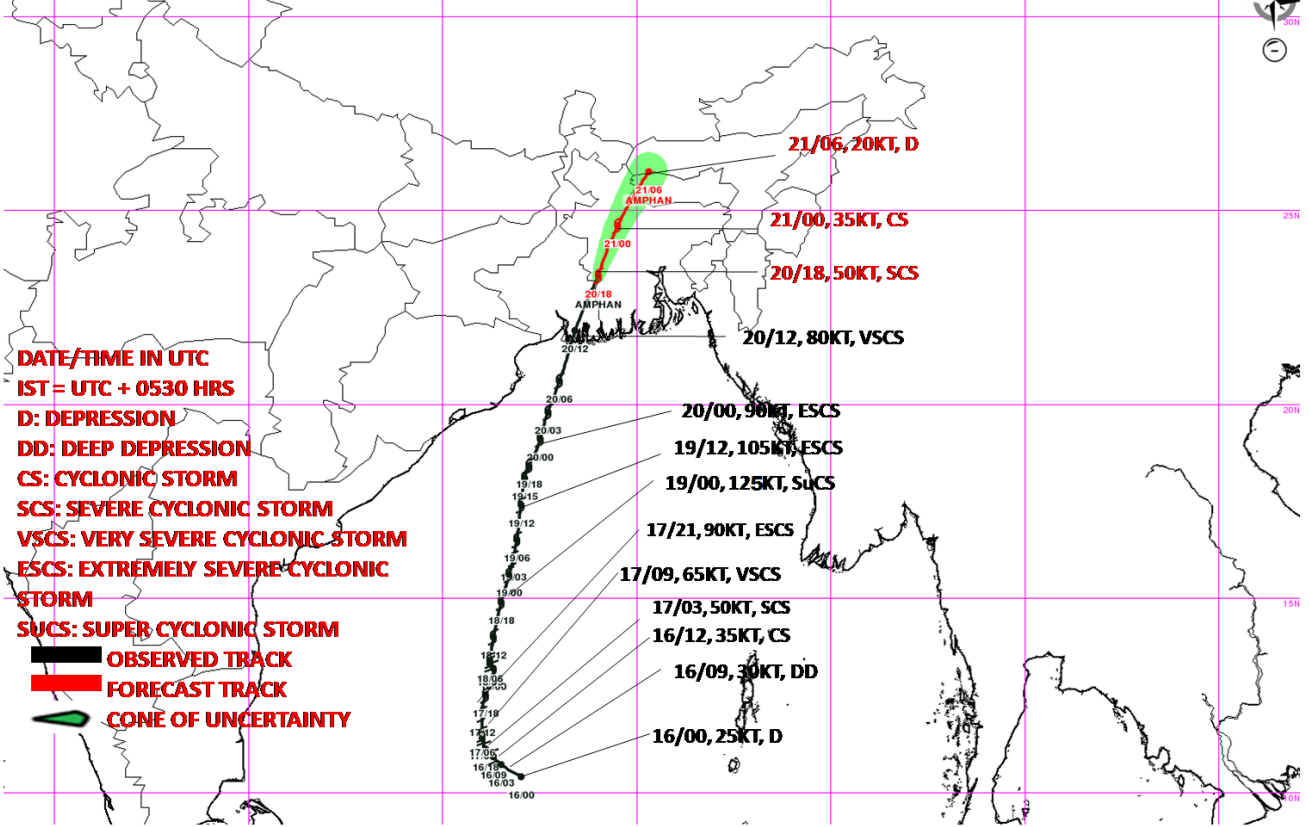
L1C Mercator



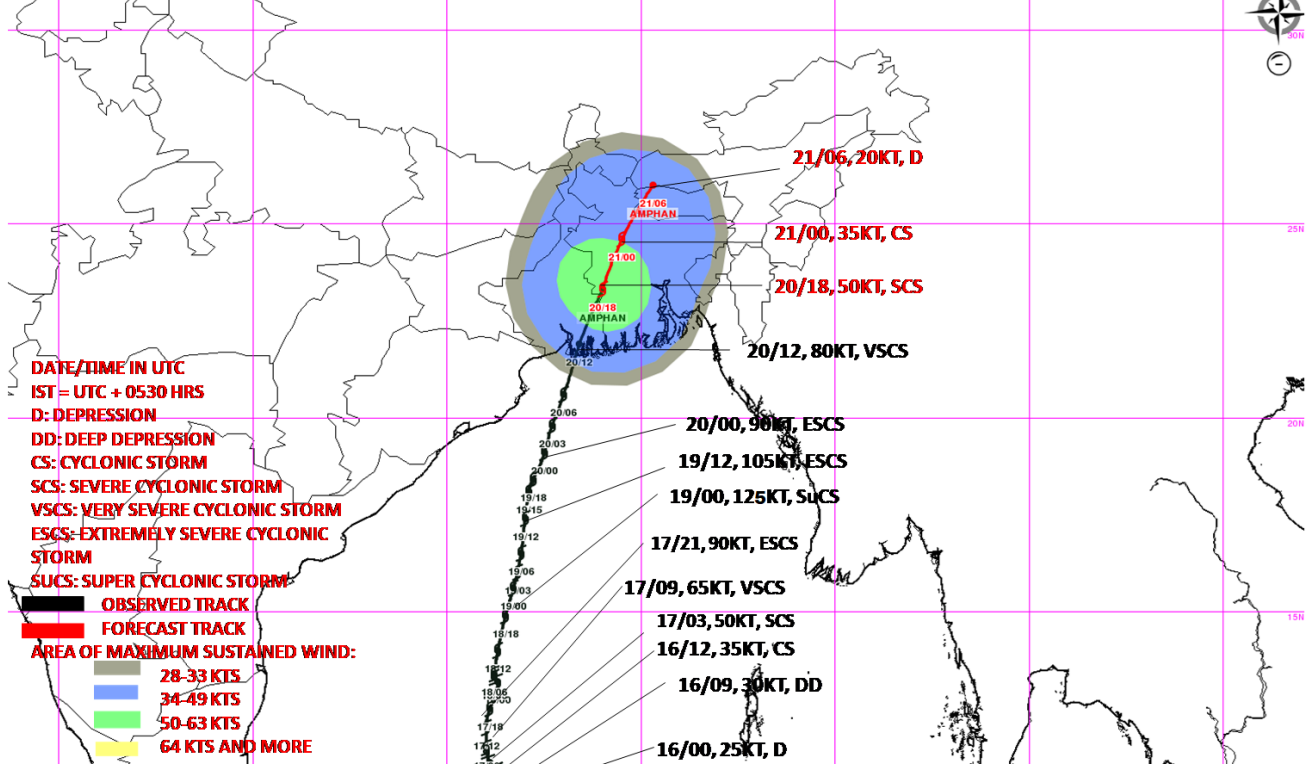
Legend: WCB – Westcentral Bay of Bengal
NWB – Northwest Bay of Bengal

Spatial rainfall distribution: Isolated: <25%, A few: 26-50%, Many: 51-75%, Most: 76-100%
Rainfall amount (mm): Heavy rain: 64.5 – 115.5, Very heavy rain: 115.6 – 204.4, Extremely heavy rain: 204.5 or more.

OBSERVED & FORECAST TRACK ALONGWITH CONE OF UNCERTAINTY OF SEVERE CYCLONIC STORM 'AMPHAN' OVER ADJOINING BANGLADESH AND WEST BENGAL BASED ON 1800 UTC OF 20TH MAY, 2020



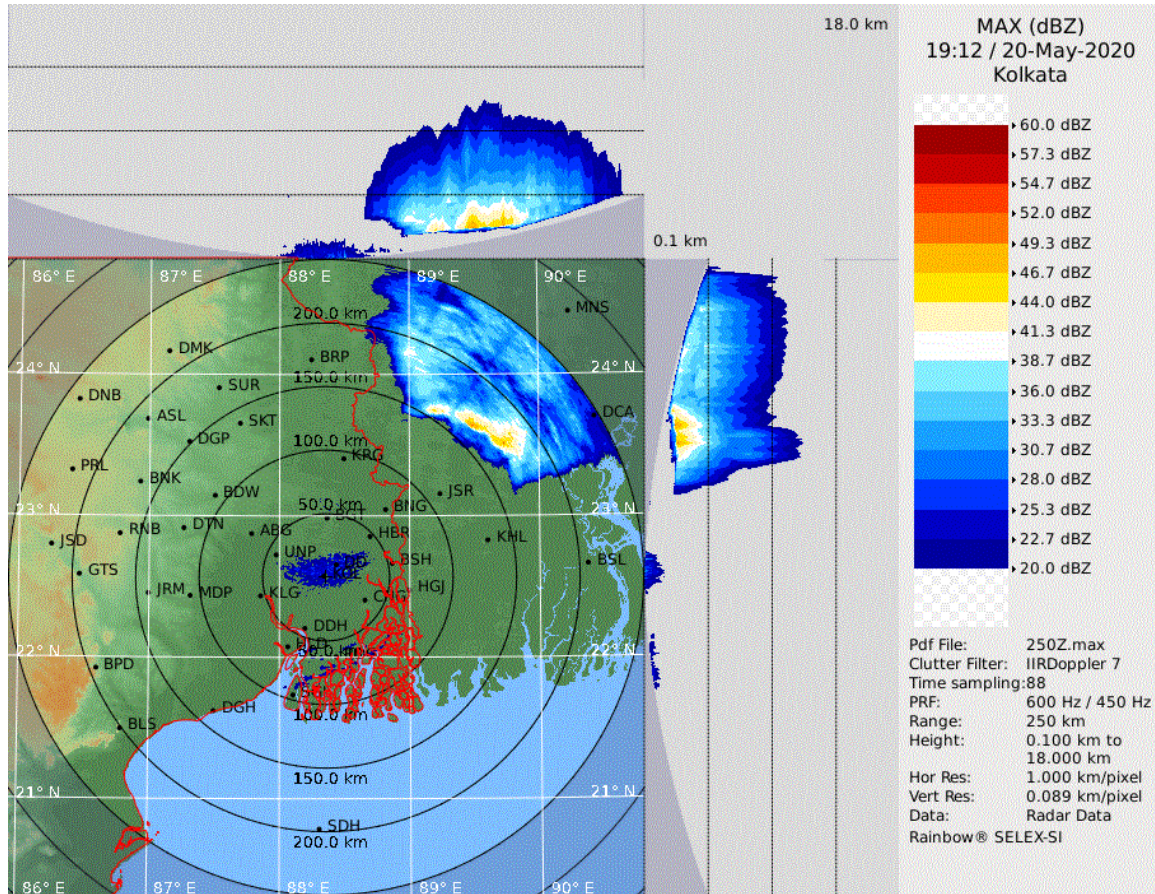
OBSERVED & FORECAST TRACK ALONGWITH QUADRANT WIND DISTRIBUTION OF SEVERE CYCLONIC STORM, AMPHAN OVER ADJOINING BANGLADESH AND WEST BENGAL BASED ON 1800 UTC OF 20TH MAY, 2020



MSW(knot/kmph)	Impact	Action
28-33 (52-61)	Very rough seas.	Total suspension of fishing operations
34-49 (62-74)	High to very high seas	Total suspension of fishing operations
41-63 (75-117)	Very High seas	Total suspension of fishing operations

Spatial rainfall distribution: Isolated: <25%, A few: 26-50%, Many: 51-75%, Most: 76-100%
 Rainfall amount (mm): Heavy rain: 64.5 – 115.5, Very heavy rain: 115.6 – 204.4, Extremely heavy rain: 204.5 or more.

Figure: Reflectivity of Kolkata Doppler Weather Radar at 1912 UTC of 20th May 2020



Spatial rainfall distribution: Isolated: <25%, A few: 26-50%, Many: 51-75%, Most: 76-100%
Rainfall amount (mm): Heavy rain: 64.5 – 115.5, Very heavy rain: 115.6 – 204.4, Extremely heavy rain: 204.5 or more.